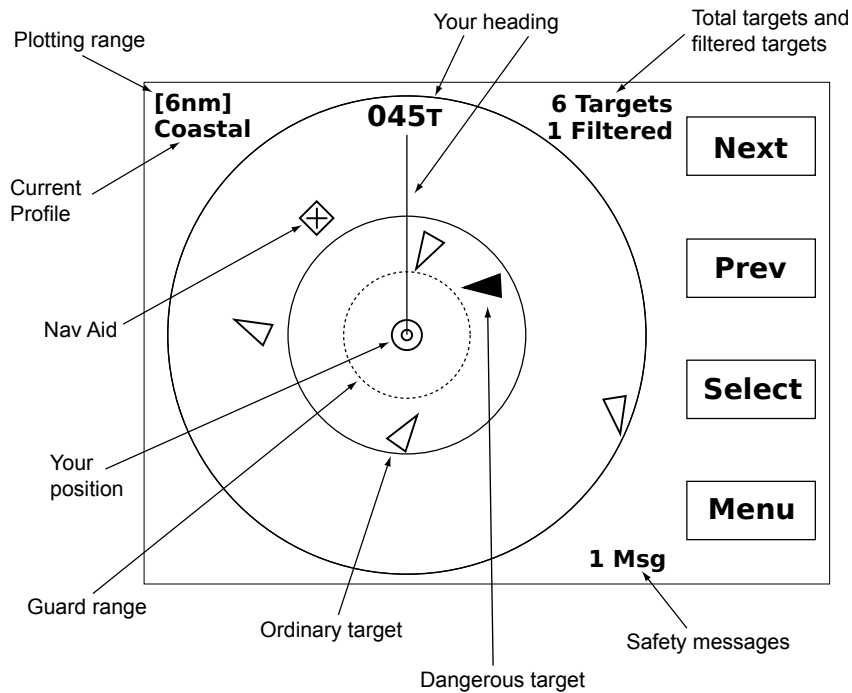


Graphical Situation Display



- ▲ Triangle points in the direction of the target's heading.
- ▲ This target meets one or more of your alarm criteria.
- ◇ An aid to navigation.
- ◆ This aid to navigation meets one or more of your alarm criteria.
- ⊙ Target is marked as a member of your "fleet".
- ▣ Selected target. Press the *Select* button to view the complete target details.
- ✕ Target is "lost". No AIS data has been received from the target within the expected intervals.
- ↑ Display is oriented North-Up for this profile. Use setup to change.

Operating Hints

- To remove the pop-up information window when a target is selected either cycle through the targets with the *Next* or *Prev* buttons until there are no more targets or use "Clear Selection" from the *Menu*.
- The situation display is shown either heading-up or north-up depending on the setup options for the current profile. If heading-up is selected and no heading data is available, then course-up is used.
- The *Next* and *Prev* buttons cycle through the targets based on their priority. It's possible that pressing *Prev* after *Next* won't take you back to the same target because its priority has changed. This occurs most frequently when you are stationary due to erroneous course fluctuations being reported by your GPS.
- When there are many targets:
 1. Use the target list. It shows all targets in priority order. To get to the target list, use the *Menu* button. You can stay on the target list screen and go back and forth between it and each target's detail screen.
 2. If there are many moored or anchored ships, you can reduce clutter on the graphical display by filtering stationary or non-converging targets. Use the target filters in setup (accessed from the *Menu* button).
 3. Consider displaying COG instead of CPA on the target list if you are operating where there are many moored or anchored ships. This allows you to easily identify those ships that are moving without filtering them. Use the "Data display in target list" setting to change this.
- Use profiles to reduce nuisance alarms. Profiles let you group all the alarm and filter settings and select them at once. Use the *Menu* button to change the active profile. Use Setup mode to alter or view the active profile's settings. You can adjust the settings for each profile once to meet your needs and then quickly switch profiles whenever your situation changes.
- If you wish to re-enable alarms for a target that you have muted, press the *Menu* button on the target details screen.
- The plotting distance on the CPA screen (not the Situation Display) is the same for all targets regardless of their CPA. This screen shows the relative bearing of the selected target at the time of CPA. The range at CPA is indicated on the plot and at the top of the page.