

AISWatchMate[®] RX Getting Started Guide

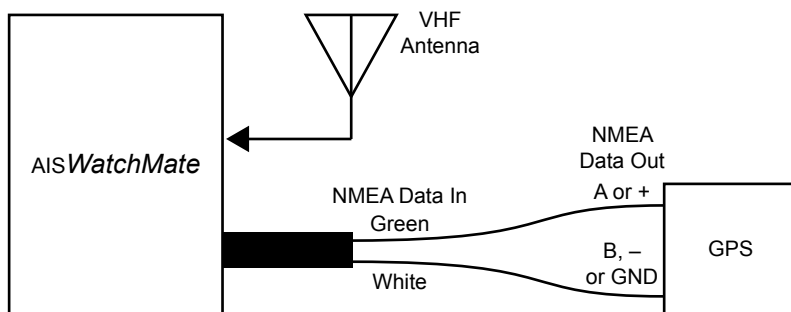
Connect a VHF antenna

Connect a suitable VHF antenna to the antenna terminal. Use a BNC to UHF (SO239) adapter or cable if necessary. If you wish to use an antenna splitter to share an antenna with your VHF radio ensure the splitter is designed for AIS.

Connect a GPS

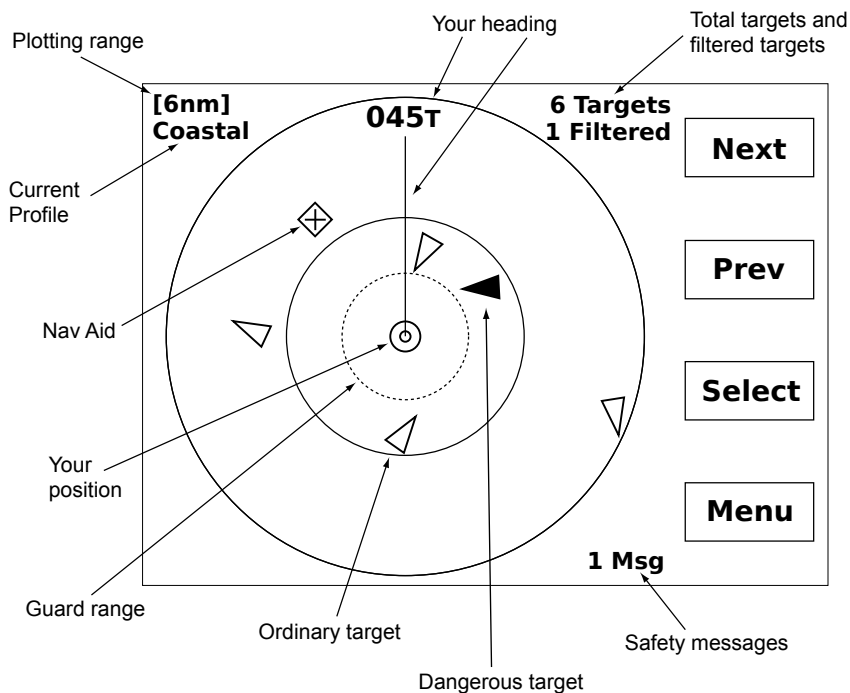
Connect your GPS to NMEA data-in. Connect NMEA data-in A to your GPS NMEA data-out (usually marked A, + or just data out). Connect NMEA data-in B to your GPS NMEA data-out B, – or ground. See your GPS manual for details.









You must connect the AISWatchMate to a GPS for alarms to function.



Red	DC positive (+) (10-32 volts) Do not connect directly to battery. Use a 2 amp (max) fuse or circuit breaker.
Black	DC negative (-)
Orange	RS232 data in
Pink	RS232 data out
Yellow	Signal ground (used for both RS232 and NMEA data out)
Gray	NMEA data out
Green	NMEA data in (A)
White	NMEA data in (B)
Blue	External alarm switch
Brown	External alarm switch

Graphical Situation Display



-  Triangle points in the direction of the target's heading.
-  This target meets one or more of your alarm criteria.
-  An aid to navigation.
-  This aid to navigation meets one or more of your alarm criteria.
-  Target is marked as a member of your "fleet".
-  Selected target. Press the *Select* button to view the complete target details.
-  Target is "lost". No AIS data has been received from the target within the expected intervals.
-  Display is oriented North-Up for this profile. Use setup to change.

Please see the enclosed CD for more operating hints

CPA	Closest point of approach in nautical miles. The nearest a target will come to your vessel if both maintain their course and speed.
TCPA	Time until closest point of approach will occur (minutes and seconds).
BRG	Bearing from your vessel in degrees magnetic, true or relative.
RNG	Range from your vessel in nautical miles.
SOG	Speed over ground in knots.
COG	Course over ground in degrees true or magnetic.
HDG	Heading in degrees true or magnetic.
ROT	Rate of turn shown as direction and degrees per minute.
IMO	International ship registration number.
MMSI	Radio identifier. Used to call vessels via DSC radios.

AIS data is received at various intervals. As a result, you will see the MMSI number instead of the ship's name until more data has arrived.

Alarm Types

Guard alarm - based on each a target's current distance from your vessel.

CPA alarm - there are several settings associated with CPA alarms: CPA alarm distance, time until CPA (TCPA), target speed and your vessel speed. The CPA alarm distance indicates which targets will trigger the alarm. The other settings suppress alarms if the TCPA is too great, or either vessel's speed is too slow. Help for these, and all other settings, is displayed on each setup screen.

Muting Alarms

Alarms are muted for each individual target. All other targets remain active.

Profiles

Alarm and filter settings are grouped into four profiles (anchored, harbour, coastal, offshore). You can change the settings for each profile and switch between profiles at any time. Select the current profile from the main menu.

Filters

You may filter targets based on their speed, range or CPA. Filters can be used to reduce clutter. Use setup to establish filters for the current profile.

Setup

To change alarm and filter settings associated with a profile, you must select the profile prior to entering setup mode. Setup mode is accessed from the main menu.

Target List

Shows targets in priority order. Particularly useful when there are many targets and the screen is cluttered.

Warnings

The *AISWatchMate* works in conjunction with other vessels and systems such as AIS transponders and GPS. The accuracy of this device and the AIS system can be affected by many factors, including equipment failure or defects, environmental conditions and incorrect installation, handling or use. Vesper Marine does not warrant that this product is error-free. It is the user's responsibility to exercise common prudence and navigational judgement. This device should not be relied upon as a substitute for such prudence and judgement. Always maintain a permanent watch so that you can respond to situations as they develop.

The prudent mariner will not rely on a single aid to navigation. The user should verify the information obtained from the *AISWatchMate* is in accordance with expected situations and conditions. The information is not guaranteed to be accurate or reliable and the *AISWatchMate* is not a substitute for proper seamanship.

Vesper Marine Limited cannot be held liable for any injury, damage or loss, caused by, during, or because of the installation, use or inability to use this device. The *AISWatchMate* is to be installed and used entirely at your own risk. By installing and/or using the *AISWatchMate* you fully accept this risk and agree to hold Vesper Marine Limited harmless.

Take care when cleaning to avoid damage:

- Be careful when wiping the display screen to avoid scratching. Use a clean soft damp cloth.
- Do not use acid, ammonia, solvents or any abrasive products.

Trademarks and Copyrights

AISWatchMate is a registered trademark of Vesper Marine Ltd. All other product names are trademarks or registered trademarks of their respective owners.

Copyright © 2009, Vesper Marine Ltd.

Unless otherwise indicated, all documentation and operating software contained within this product or distributed with this product is copyrighted by Vesper Marine Ltd. All rights are reserved.


vespermarine

Westhaven Drive, St. Mary's Bay
PO Box 91164, Victoria Street West
Auckland 1142
New Zealand

+64 (0)9 950 4848

www.vespermarine.com
support@vespermarine.com